

# Nest-O-Matic Nest Box Instructions

#540410

Tools Required: Philips Screwdriver, #10 Metric Wrench or Socket and Adjustable Wrench

## PARTS:



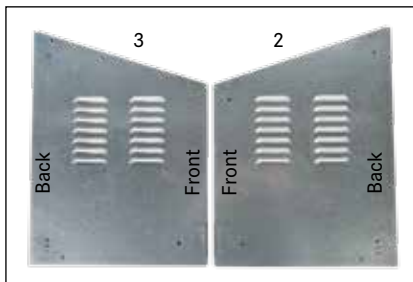
1. Egg Collector - #5404101



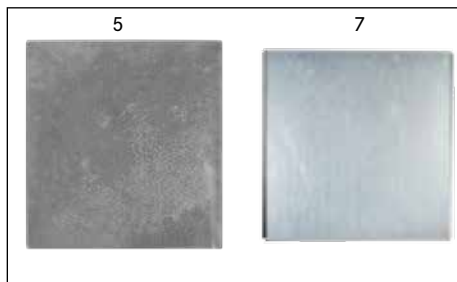
4. Back Plate - #5404104



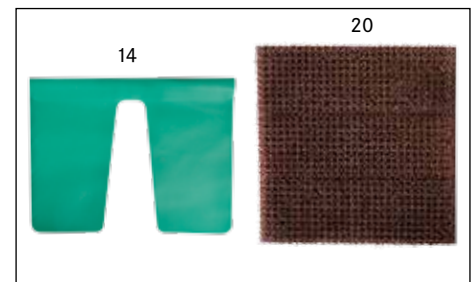
8. Egg Collector Lid - #5404108



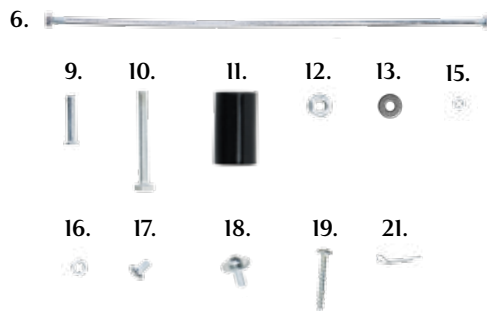
2. Right Side Plate - #5404102  
3. Left Side Plate - #5404103



5. Top Plate - #5404105  
7. Bottom Plate - #5404107



14. Front Curtain - #5404114  
20. Nest Pad - #5404120



6. 2 - shafts - #5404106  
9. 2 - hinge pins - #5404109  
10. 4 - 50 mm bolts - #5404110  
11. 4 - spacers - #5404111  
12. 4 - 6 mm shoulder nuts - #5404112  
13. 4 - 6 mm washers - #5404113  
15. 4 - 5 mm nuts - #5404115  
16. 4 - 6 mm nuts - #5404116  
17. 4 - 5 mm bolts - #5404117  
18. 10 - 17mm machine screws with washers - #5404118  
19. 2 - 25 mm screws - #5404119  
21. 2 - cotter pins - #5404121

**Note: Only hand tighten all hardware until final assembly.**



1. Install two hinge pins (9) with cotter pins (21) to attach lid (8) of egg collector (1).



2. Install back plate (4) to left and right side plates (2,3) using six 17mm machine screws with washers (18).



3. Insert shaft (6) into desired height through the back of side plates then secure using 6 mm nut (16) to each side. (Note: do not tighten all the way until completely assembled or bottom will not fit.)



4. Install bottom plate (7) by setting back of bottom plate on top of back shaft and front to the bottom of side plates.



5. Insert nest pad (20) into bottom of Nest-O-Matic.



6. Install top plate (5) using four 17mm machine screws with washers (18).



7. Install front curtain (14) using shaft (6) and 6 mm nuts (16) to each side.



8. Attach egg collector to front of Nest-O-Matic using four 5mm bolts (17) and nuts (15). Tighten all hardware.



9. Install four spacers (11), washers (13), 6mm shoulder nuts (12), and 50 mm bolts (10) to side of Nest-O-Matic if attaching additional units together.

10. If attaching to wall, use two 25mm screws (19). Attach via back panel, not sides.



[www.premier1supplies.com](http://www.premier1supplies.com)

800-282-6631

© Copyright 2016, Premier1Supplies. All rights reserved.